



Ficha técnica de Equipos de IMB Ingeniería en Redes SAS

Resumen: La siguiente ficha técnica contiene información detallada de los equipos CPE instalados por nuestra empresa para brindar la mejor cobertura y calidad de servicio.

DISPOSITIVO	MODELO
MIKROTIK	LGH 5
MIKROTIK	SXT 2 SQ
MIKROTIK	DISCLITE 5
MIKROTIK	SXT 5 SQ
MIKROTIK	LHG 2
TP-LINK	TL-WR 850N
HUAWEI	EG 8145 A 5



ONU EG8145V5

El EchoLife EG8145V5 es un terminal de red óptica (ONT) de routing inteligente integrado en la solución FTTH de Huawei. Mediante el uso de la tecnología GPON, se proporciona acceso por banda ultraancha a los usuarios domésticos. El EG8145V5 es compatible con las bandas de doble frecuencia 802.11ac y cuenta con funciones de reenvío de alto rendimiento para garantizar una excelente experiencia con servicios de voz, Internet y vídeo de alta definición. Estas características hacen del EG8145V5 una opción perfecta para el acceso por banda ancha.

CARACTERISTICAS

Plug-and-play

El sistema de gestión de red proporciona automáticamente las configuraciones, por lo que no es necesario el commissioning in situ.

Servicio integral Triple Play

El ONT proporciona numerosos puertos para implementar servicios de acceso múltiple, incluido almacenamiento conectado a la red doméstica, el acceso a Internet y los servicios de vídeo, lo que proporciona a los usuarios un servicio integral Triple Play.

Eficiencia energética

Módulos PON, voz, gateways y LSW integrados, con un ahorro de energía de hasta un 25 %.

Especificaciones

Modelo	EchoLife EG8145V5
Tipo	Routing
Dimensiones (altura x ancho x profundidad)	173 mm x 120 mm x 30 mm (sin antena y pads)
Temperatura de funcionamiento	0 °C a 40 °C
Humedad de funcionamiento	5 % al 95 % HR (sin condensación)
Entrada del adaptador de alimentación	100 V a 240 V CA, 50 Hz/60 Hz
Fuente de alimentación del sistema	11 V a 14 V CC, 2 A
Puertos de red	GPON
Puertos de usuario	1 POTS + 4GE + Wi-Fi + USB
Indicadores	POWER, PON, LOS, LAN1, LAN2, LAN3, LAN4, TEL, USB, WLAN y WPS

DISC Lite5

The DISC is a low cost high gain 5 GHz CPE. By using a unique and innovative short backfire antenna design, we were able to achieve 21 dBi antenna gain in a compact and easy to deploy package.

DISC Lite5 is based on our popular LHG hardware design and is equipped with 21dBi dual chain 802.11n integrated CPE with 600 MHz CPU, 64 MB RAM, 1x 10/100 Mbps Ethernet port and RouterOS L3 installed. It comes complete with a power supply, PoE injector and mounting ring. The device is also compatible with our SXT mounting systems, including the quickMOUNT pro series.

The RouterOS Level3 allows to use the DISC Lite5 as a CPE or for 5 GHz Point-to-Point links.



Wireless specifications

Rate	Tx	Rx
6MBit/s	25	-96
54MBit/s	20	-80
MCS0	25	-96
MCS7	19	-75

Antenna type	Short backfire
Antenna gain	21 dBi
Port-to-port isolation	20 dB
Front-to-back ratio	30 dB
Side lobe level	15 dB

Specifications

Product code	RBDisc-5nD (International) RBDisc-5nD-US (USA)
CPU	AR9344 600 MHz
Memory	64 MB
Storage type	Flash
Storage size	16 MB
Ethernet	One 10/100 Mbit/s Fast Ethernet port with Auto-MDI/X
Wireless	AR9344, wireless built-in 5 GHz 802.11a/n, dual chain
Wireless regulations	Specific frequency range may be limited by country regulations
Frequency range	International: 5150 MHz-5875 MHz USA: 5170-5250 MHz; 5725-5835 MHz
Power options	Passive PoE input 11-30 V
Consumption	6 W
Antenna gain	21 dBi
Antenna beam width	12°
Dimensions	Diameter 265mm, height: 80mm
Operating temperature	-40°C .. +70°C tested
LEDs	8x LEDs (6x user LEDs)
License level	3
Operating system	RouterOS
Suggested price	\$48

Included



24 V 0.38 A
power adapter



Metal ring



PoE injector

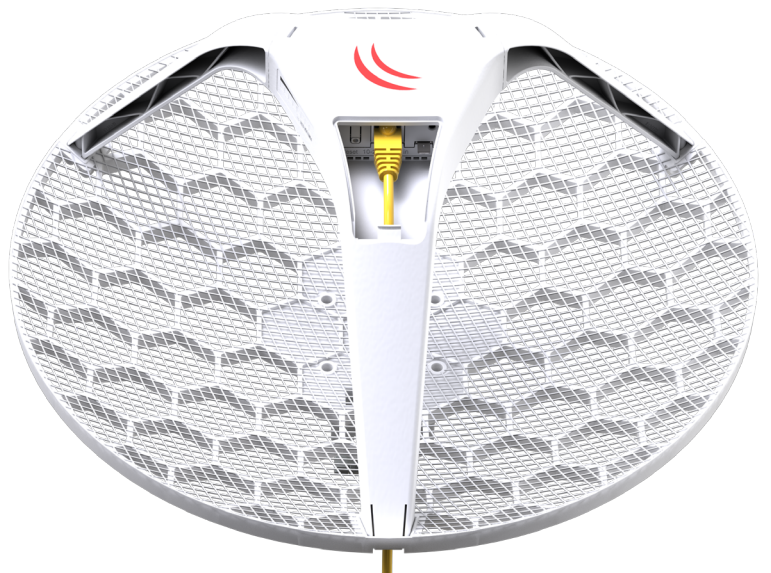
LHG 2

The Light Head Grid (LHG) is a compact and light 2.4 GHz 802.11b/g/n wireless device with an integrated dual polarization 18 dBi grid antenna at a revolutionary price. It is perfect for point to point links or for use as a CPE at longer distances and supports Nv2 TDMA protocol.

The grid design ensures protection against wind, and the fact that the antenna element is built into the wireless unit means no loss on cables.



The device comes disassembled for compact shipping, but is very easy to assemble and includes a simple to use grounding attachment point. The package also contains a small adapter for tilting the antenna five degrees from the original position.



Specifications

Product code	RBLHG-2nD
CPU nominal frequency	650 MHz
Size of RAM	64 MB
Storage	16 MB Flash
10/100 Ethernet ports	1
Wireless	Built-in 2.4 GHz 802.11b/g/n, dual-chain
Wireless regulations	Specific frequency range can be limited by country regulations
Wireless chip model	QCA9533
Operating frequency	2412 - 2484 MHz
Antenna gain	18 +/- 0.5 dBi
Antenna beam width	18°
Cross polar	15 dBi
Port to port isolation	23 dB
Front to back ratio	25 dB
PoE in	Yes
Supported input voltage	10 V - 30 V (passive PoE)
Wind loading	186N @ 205 km/h
Operating temperature	-40 to 70° C
Operating humidity	5 to 95% noncondensing
Shock and vibration	ETSI300-019-1.4
ETSI specification	EN 302 326 DN2
Dimensions	Ø 391 x 222 mm; package 450 x 450 x 145 mm
Weight	Unit: 560 g; package: 1.98 kg
Max Power consumption	5 W

Included



24V 0.38A Power adapter



PoE injector



2x metal rings



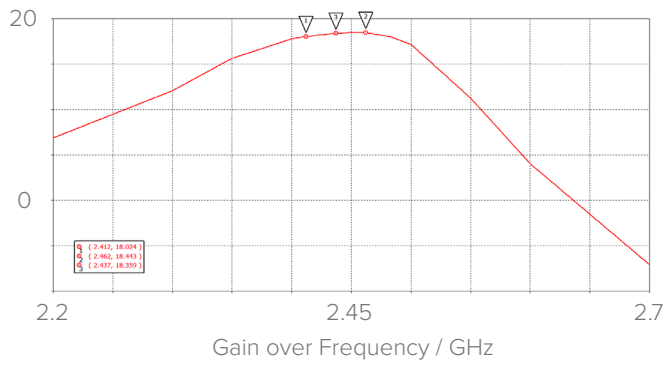
K-LHG kit

Wireless specifications

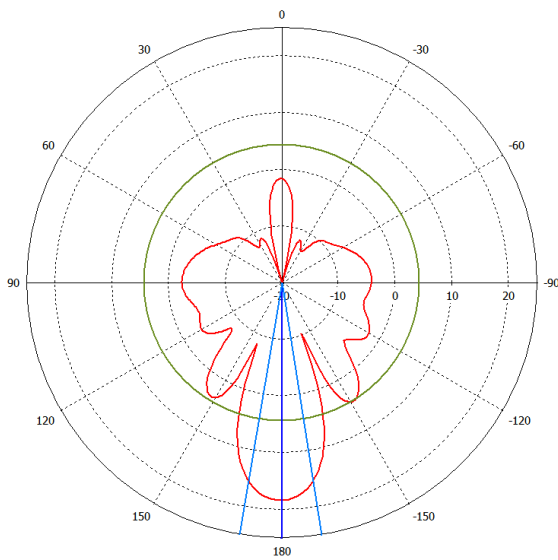
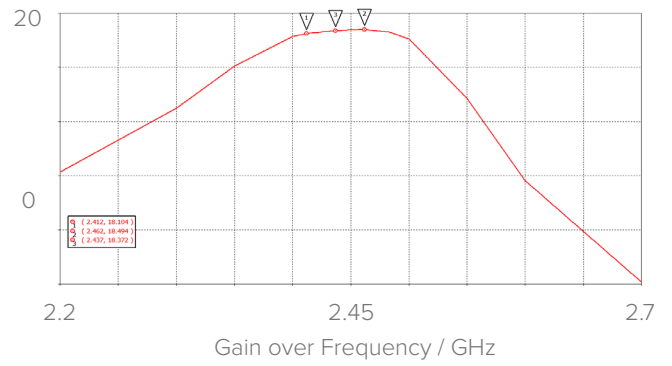
RATE	Tx (dBm)	Rx (dBm)
1MBit/s	25	-100
11MBit/s	25	-93
6MBit/s	25	-94
54MBit/s	22	-80
MCS0	25	-94
MCS7	21	-75

Antenna specifications

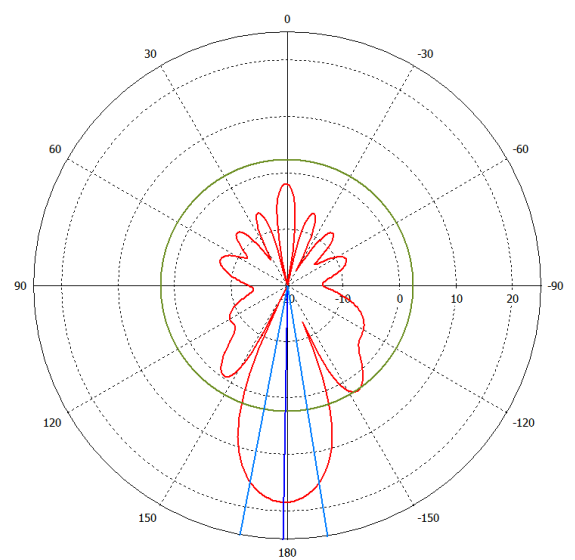
Horizontal polarization



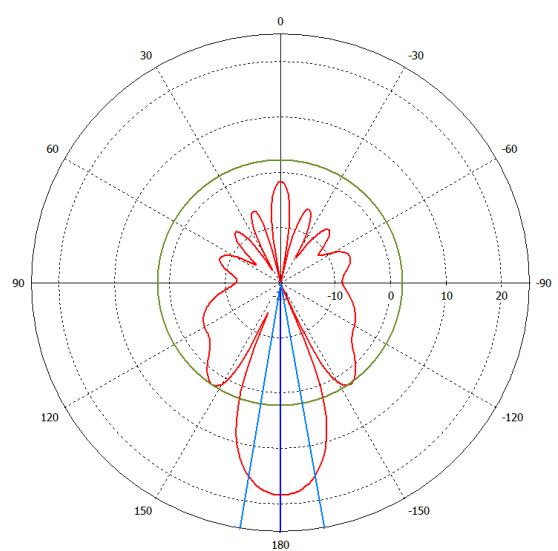
Vertical polarization



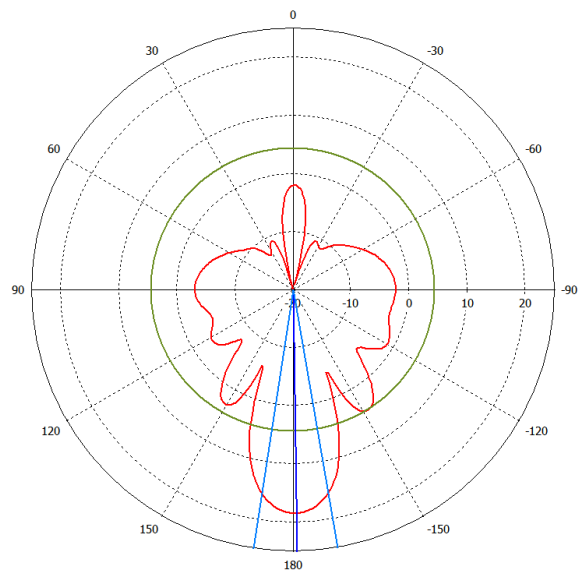
Horizontal 0 deg



Vertical 0 deg



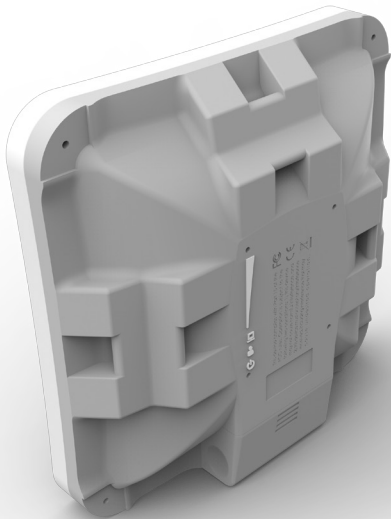
Horizontal 90 deg



Vertical 90 deg

SXTsq Lite5

The SXTsq Lite5 is a compact and lightweight outdoor wireless device with an integrated antenna. Perfect for point-to-point links of up to 12 kilometers or as a CPE unit. It is compact, weatherproof and easy to mount. The SXTsq Lite5 retains a 16 dBi antenna like the SXT Lite5, our previous model, yet the antenna design has been improved and the physical size has been dramatically reduced - the SXTsq is two times thinner.



The enclosure includes slots for directly attaching a hose clamp mount in three different mounting places, with ability to be mounted on horizontal railings. The device includes one 10/100 Mbit ethernet port. There is also an easily accessible grounding connection to protect it against lightning.

Comparison to previous SXTs



24 V 0.38 A power adapter



Metal ring



PoE injector

Specifications

Product code	RBSXTsq5nD (International), RBSXTsq5nD-US (USA)	
CPU	AR9344	
CPU nominal frequency	600 MHz	
CPU core count	1	
Size of RAM	64 MB	
Storage	16 MB Flash	
10/100 Ethernet ports	1	
Wireless bands	5 GHz radio	
Wireless regulations	Specific frequency range may be limited by country regulations	
Operating frequency	International	5150 - 5875 MHz
	USA	5170 - 5250 MHz 5725 - 5835 MHz
Protocols	802.11a/n	
Chains	2	
Antenna gain	16 dBi	
Antenna beam width	23°	
Wireless chip model	AR9344	
PoE in	Yes	
Supported input voltage	10 V - 30 V, passive PoE	
Dimensions	129x129x34 mm; package: 255x180x45 mm	
Weight	Unit: 295 g; package: 492 g	
Operating temperature	-40 to 70° C	
License level	3	
Operating System	RouterOS	
Max Power consumption	6 W	

Wireless specifications

RATE (5 GHz)	Tx (dBm)	Rx (dBm)
6MBit/s	25	-96
54MBit/s	20	-80
MCS0	25	-96
MCS7	19	-75

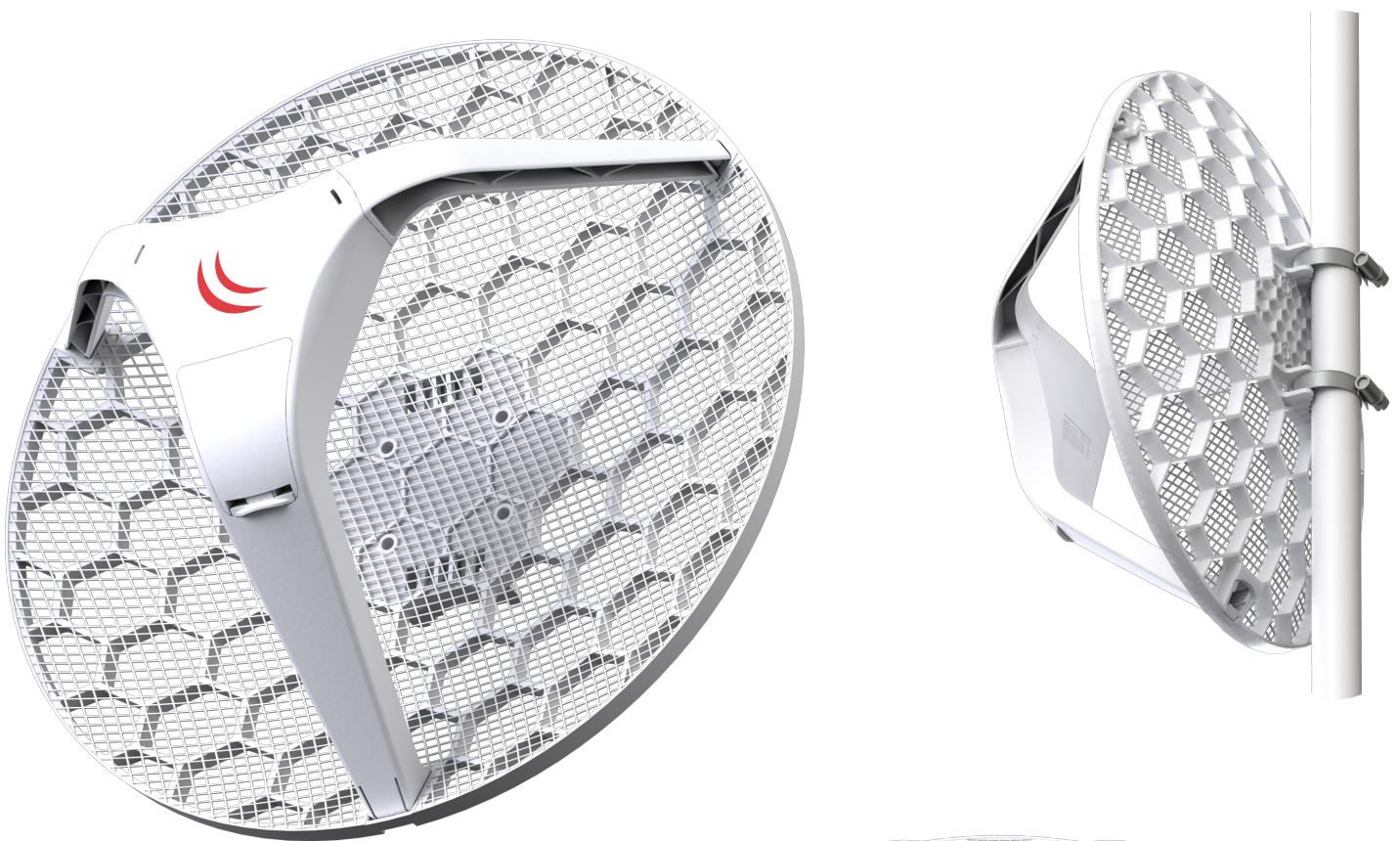
QuickMount Pro adjustable mount available separately.



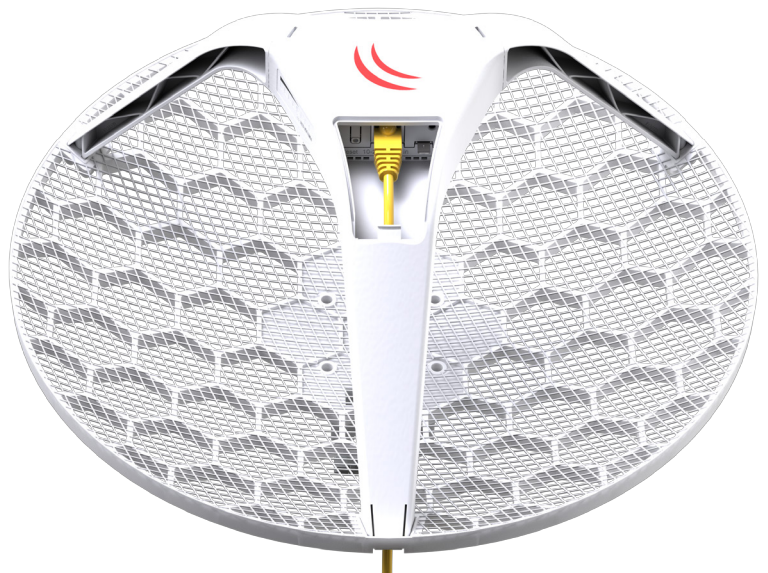
LHG 5

The Light Head Grid (LHG) is a compact and light 5 GHz 802.11 a/n wireless device with an integrated dual polarization 24.5 dBi grid antenna at a revolutionary price. It is perfect for point to point links or for use as a CPE at longer distances and supports Nv2 TDMA protocol.

The grid design ensures protection against wind, and the fact that the antenna element is built into the wireless unit means no loss on cables.



The device comes disassembled for compact shipping, but is very easy to assemble and includes a simple to use grounding attachment point. The package also contains a small adapter for tilting the antenna five degrees from the original position.



Specifications

Product code	RBLHG-5nD (International) RBLHG-5nD-US (USA)	
CPU nominal frequency	600 MHz	
Size of RAM	64 MB	
Storage	16 MB Flash	
10/100 Ethernet ports	1	
Wireless	Built-in 5 GHz 802.11a/n, dual-chain	
Wireless regulations	Specific frequency range can be limited by country regulations	
Wireless chip model	AR9344	
Operating frequency	International	5150 - 5875 MHz
	USA	5170 - 5250 MHz 5725 - 5835 MHz
Antenna gain	24.5 +/- 0.5 dBi	
Antenna beam width	7°	
Cross polar	15 dBi	
Port to port isolation	20 dB	
Front to back ratio	25 dB	
Return loss	10 dB	
VSWR	1.925:1	
PoE in	Yes	
Supported input voltage	11 V - 30 V (passive PoE)	
Wind loading	186N @ 205 km/h	
Operating temperature	-40 to 70° C	
Operating humidity	5 to 95% noncondensing	
Shock and vibration	ETSI300-019-1.4	
ETSI specification	EN 302 326 DN2	
Dimensions	Ø 391 x 222 mm; package 450 x 450 x 145 mm	
Weight	Unit: 560 g; package: 1.98 kg	
Max Power consumption	6 W	

Included



24V 0.38A Power adapter



PoE injector



2x metal rings



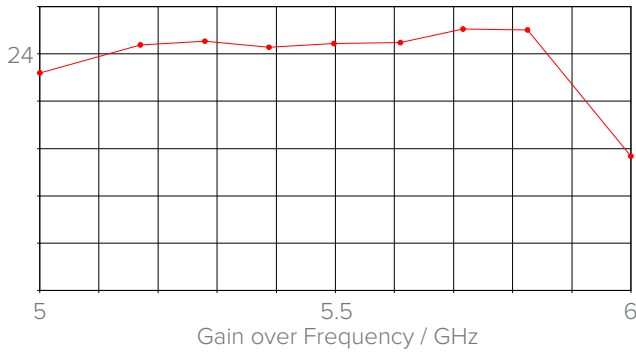
K-LHG kit

Wireless specifications

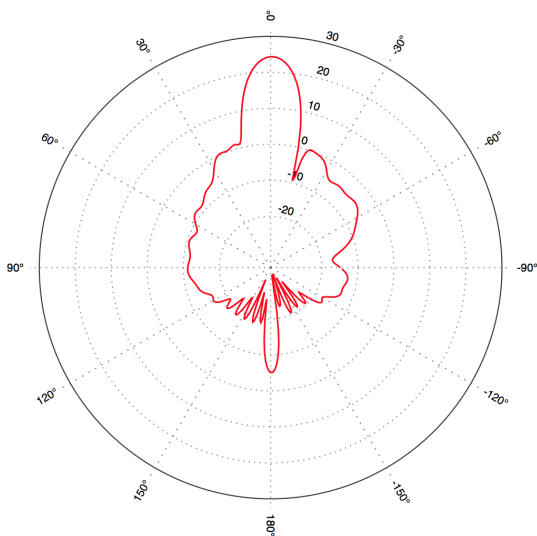
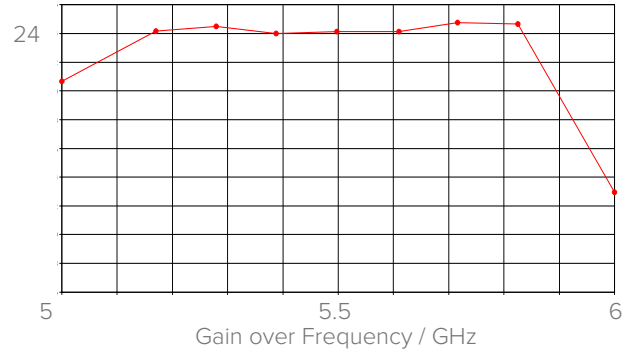
RATE	Tx (dBm)	Rx (dBm)
6MBit/s	25	-96
54MBit/s	20	-80
MCS0	25	-96
MCS7	19	-75

Antenna specifications

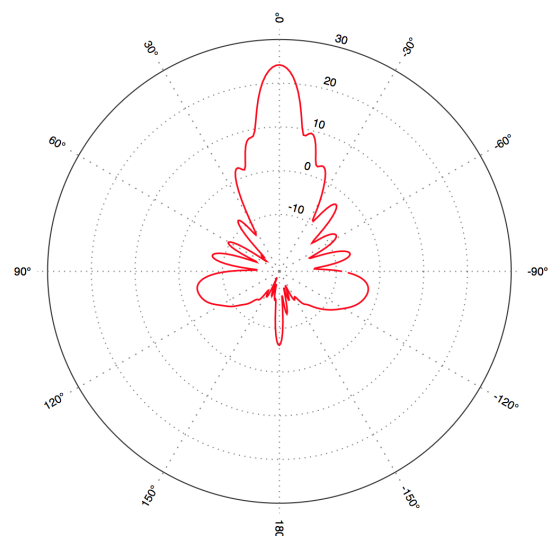
Horizontal polarization



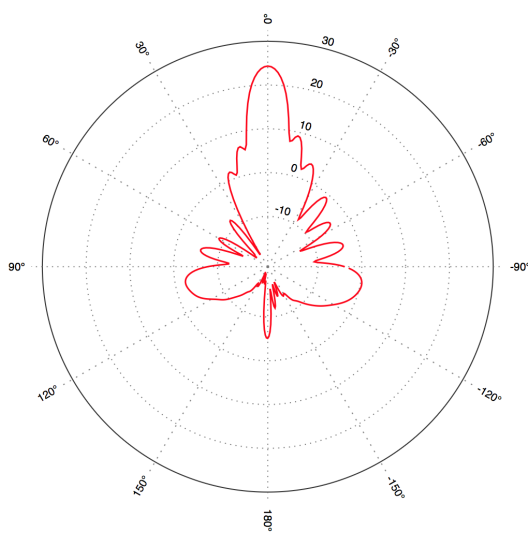
Vertical polarization



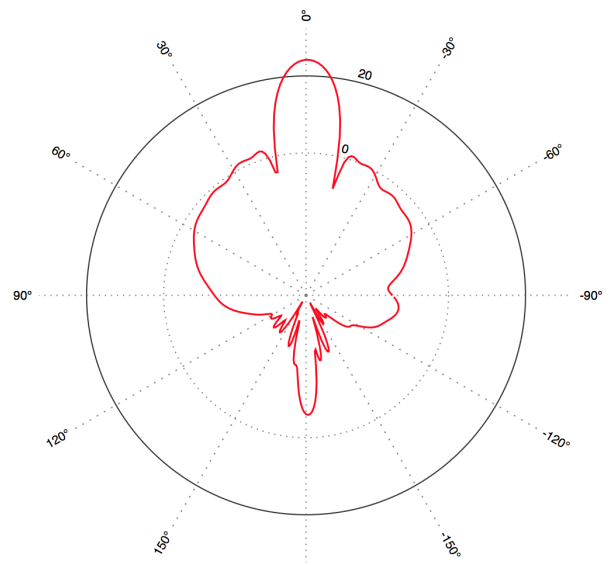
Horizontal 0 deg



Vertical 0 deg



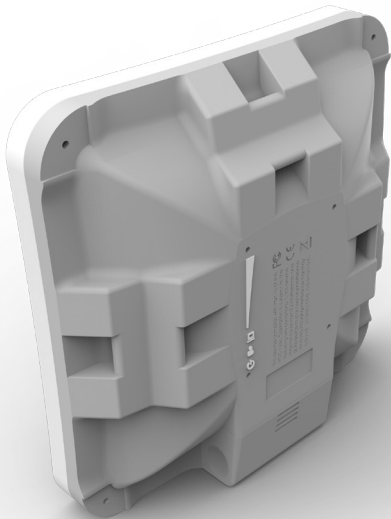
Horizontal 90 deg



Vertical 90 deg

SXTsq Lite2

The SXTsq Lite2 is a compact and lightweight outdoor wireless device with an integrated antenna. Perfect for point-to-point links or as a CPE unit. It is compact, weatherproof and easy to mount. The SXTsq Lite2 retains a 10 dBi antenna like the SXT Lite2, our previous model, yet the antenna design has been improved and the physical size has been dramatically reduced - the SXTsq is two times thinner.



The enclosure includes slots for directly attaching a hose clamp mount in three different mounting places, with ability to be mounted on horizontal railings. The device includes one 10/100 Mbit Ethernet port. There is also an easily accessible grounding connection to protect it against lightning.

Comparison to previous SXTs



24 V 0.38 A power adapter



Metal ring



PoE injector

Specifications

Product code	RBSXTsq2nD
CPU	QCA9533
CPU nominal frequency	650 MHz
CPU core count	1
Size of RAM	64 MB
Storage	16 MB Flash
10/100 Ethernet ports	1
Wireless bands	2.4 GHz radio
Wireless regulations	Specific frequency range may be limited by country regulations
Operating frequency	2412 - 2484 MHz
Protocols	802.11b/g/n
Chains	2
Antenna gain	10 dBi
Antenna beam width	60°
Wireless chip model	QCA9533
PoE in	Yes
Supported input voltage	10 V - 30 V, Passive PoE
Dimensions	129 x 129 x 34 mm; package: 255 x 180 x 45 mm
Weight	Unit: 295 g; package: 492 g
Operating temperature	-40 to 70° C
License level	3
Operating System	RouterOS
Max Power consumption	5 W

Wireless specifications

RATE (5 GHz)	Tx (dBm)	Rx (dBm)
1MBit/s	30	-100
11MBit/s	30	-93
6MBit/s	30	-94
54MBit/s	26	-80
MCS0	30	-94
MCS7	25	-75

QuickMount Pro adjustable mount available separately.





300Mbps Wireless N Router

N300 with Proven Stability

TL-WR850N



300Mbps
Wireless Speed



Easy Setup

Features



Reliability

- Wireless N Speed – 300Mbps Wi-Fi speed meets your daily internet needs
- 802.11n – Backward compatible with 802.11b/g products
- MIMO Technology – 2 x 2 MIMO technology increases efficiency for streaming & gaming
- Easy Bandwidth Management – Bandwidth Control allocates necessary speed of each connected device to ensure quality of multimedia streaming



Ease of Use

- Intuitive Web UI– Ensures quick and simple installation without hassle
- Fast Encryption – One-touch WPA wireless security encryption with the WPS button



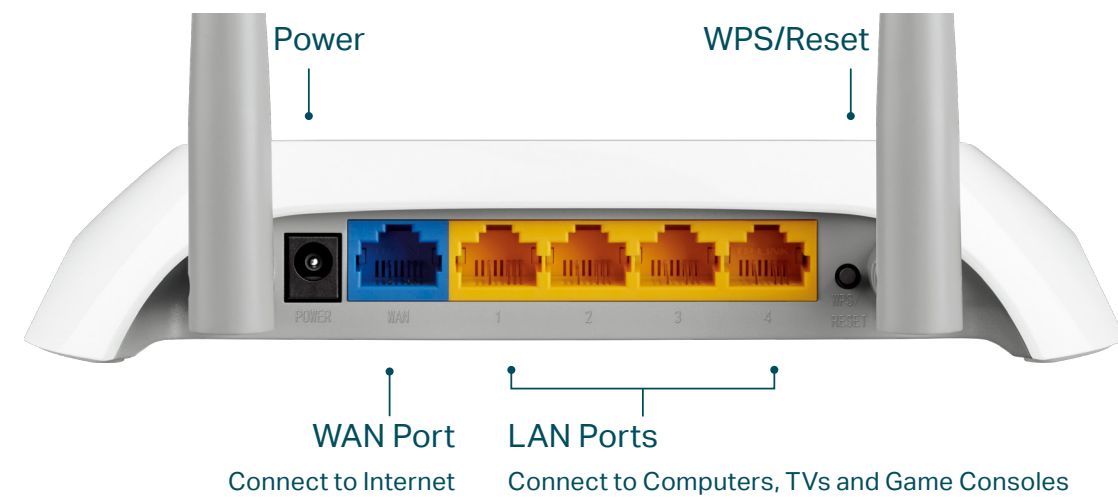
Security

- Access Control – Establish a whitelist or blacklist to allow or block certain devices from accessing the internet
- Parental Controls – Manage when and how children devices can access the internet
- Encryptions for Secure Network – WPA-PSK/WPA2- PSK encryptions provide active protection against security threats

Specifications

Hardware

- Ethernet Ports: 4 10/100Mbps LAN Ports, 1 10/100Mbps WAN Port
- Buttons: WPS/Reset Button
- Antennas: 2 fixed Omni Directional Antennas
- External Power Supply: 9VDC / 0.6A
- Dimensions (W x D x H): 7.2 x 5.0 x 1.4 in. (182 x 128 x 35mm)



Wireless

- Wireless Standards: IEEE 802.11n, IEEE 802.11g, IEEE 802.11b
- Frequency: 2.4-2.4835GHz
- Signal Rate:
 - 11n: Up to 300Mbps(dynamic)
 - 11g: Up to 54Mbps(dynamic)
 - 11b: Up to 11Mbps(dynamic)
- Reception Sensitivity:
 - 270M: -68dBm@10% PER
 - 130M: -71dBm@10% PER
 - 108M: -72dBm@10% PER
 - 54M: -74dBm@10% PER
 - 11M: -86dBm@8% PER
 - 6M: -86dBm@10% PER
 - 1M: -94dBm@8% PER
- Wireless Function: Enable/Disable Wireless Radio, WDS Bridge, WMM, Wireless Statistics
- Wireless Security: WEP, WPA / WPA2, WPA-PSK / WPA2-PSK

Specifications

Software

- Working Modes: Wireless Router, Access Point
- WAN Type: Dynamic IP/Static IP/PPPoE/PPTP/L2TP(Multi-EWAN)
- DHCP: Server, DHCP Client List, Address Reservation
- Quality of Service: WMM, Bandwidth Control
- Port Forwarding: Virtual Server, Port Triggering, UPnP, DMZ
- Dynamic DNS: DynDns, Comexe, NO-IP
- Access Control: Parental Controls, Local Management Control, Host list, Access Schedule, Rule Management
- Firewall Security: DoS, SPI Firewall, IP and MAC Address Binding
- Protocols: IPv4, IPv6
- Management: Access Control, Local Management, Remote Management, TR-069

Others

- Certification
CE, FCC, RoHS
- System Requirements
Microsoft Windows 10/8.1/8/7/Vista/XP/2000/NT/98SE, MAC OS, NetWare, UNIX or Linux
Internet Explorer 11, Firefox 12.0, Chrome 20.0, Safari 4.0, or other Java-enabled browser
Cable or DSL Modem
Subscription with an internet service provider (for internet access)
- Environment
Operating Temperature: 0°C~40°C (32°F ~104°F)
Storage Temperature: -40°C~70°C (-40°F ~158°F)
Operating Humidity: 10%~90% non-condensing
Storage Humidity: 5%~90% non-condensing
- Package Contents
300Mbps Wireless N Router TL-WR850N
Power Adapter
RJ-45 Ethernet Cable
Quick Installation Guide